

STRIDE
FREE[®]
RACING



RACING CATALOGUE
2019



STRIDE
FREE®
RACING



Innovation and Design
Award Winner
2014



StrideFree® Racing are a range of saddles and accessories designed with **equine back health** and welfare in mind. Designed and manufactured by Peter Horobin of Peter Horobin Saddlery, racing is in the blood of our second generation family enterprise. With a rich history of racing in Europe and Australia, Peter has continued his education of the racehorse, it's biomechanics and anatomy for over four decades.

How the horse gallops under saddle is paramount to the impact of stride length and with the research Peter has acquired alongside equine professionals worldwide, it has allowed him to re-invent the wheel of racing products.

The revolutionary, award-winning StrideFree® tree in both the race and exercise saddle range, has been built with an extremely strong and flexible synthetic composite. It has been tested for strength under vigorous pressure and the resilience has been second to none. Because of this, the StrideFree® tree has a lifetime warranty*.

The StrideFree® design has a larger load bearing surface area and a tree which flexes with the horses back shape. It doesn't slip forward and has proven success in the increase of freedom in shoulder movement, lengthened stride and reduces wither soreness and speedy cutting.

The StrideFree® Racing range is changing the game of racing.

*See our terms and conditions via our website www.horobin.com.au



UNDERSTANDING THAT WEIGHT IS A CRUCIAL ELEMENT FOR EVERY JOCKEY

The StrideFree® Racing race saddles range from as light as **195g** all the way through to **3kg**.

They are built on an extremely strong and flexible synthetic composite full tree. The tree's resilience is tested under difficult conditions and vigorous pressure, and the strength is absolutely second to none. The StrideFree® tree comes with a lifetime warranty*.

The StrideFree® Racing saddles are available in numerous colours, using only the top quality patent leather and full grain European leathers. The underside of the saddle is lined with a non-slip soft padding for comfort.

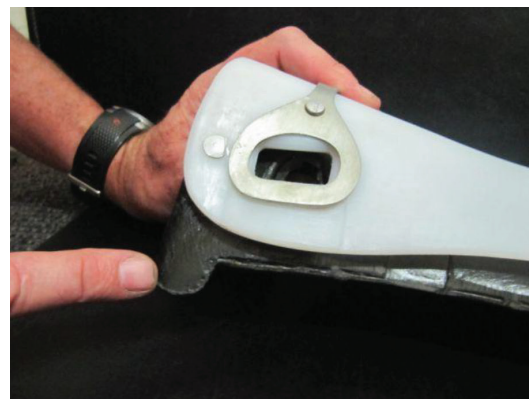
The stirrup bars have been tested under extreme pressure and girth points are durable and strong. The StrideFree® tree allows comfort for the horse providing freedom in the shoulder along with being kind on the horse's back spinal processes, scapula and trapezius muscle, allowing muscles to move freely without any restrictions.

Our saddles can be made custom made to order with many colours, piping and embroidery to choose from.

*See our terms and conditions via our website www.horobin.com.au

THE STRIDEFREE® TREE

Below are some examples of popular **race trees** and the **sharp tree points** that can be harmful to the horse, potentially causing irreversible damage to the horse's back. Each image shows the StrideFree® tree (white tree on the right) overlap the common race tree. You can see the difference where the common tree points are sharp and angle forward which places pressure on the horse's scapula. The StrideFree® tree is curved away at the shoulder so it allows minimum pressure on the horse's scapula and trapezius muscle, allowing more freedom for the horse to elevate its' leg and increase its' stride.



RACE SADDLES



195g AERO RACE SADDLE

- CODE** SF195
- COLOURS** See colour chart for leather, stitching and piping options
- GIRTH STRAPS** One girth strap attached (Two girth straps not available)
- TREE LENGTH** 9.5" (24cm)
- LEATHER** Patent Leather, Full Grain Leather



350-400g RACE SADDLE

- CODE** SF350-400
- COLOURS** See colour chart for leather, stitching and piping options
- GIRTH STRAPS** Double or single girth straps available. They are attached via stainless steel buckle. Additional pairs available for purchase
- TREE LENGTH** 11" (28cm)
- LEATHER** Patent Leather, Full Grain Leather



450-500g RACE SADDLE

- CODE** SF450-500
- COLOURS** See colour chart for leather, stitching and piping options
- GIRTH STRAPS** Double or single girth straps available. They are attached via stainless steel buckle. Additional pairs available for purchase
- TREE LENGTH** Length 12.5" (32cm)
- LEATHER** Patent Leather, Full Grain Leather



600-700g RACE SADDLE

- CODE** SF600-700
- COLOURS** See colour chart for leather, stitching and piping options
- GIRTH STRAPS** Double or single girth straps available. They are attached via stainless steel buckle. Additional pairs available for purchase
- TREE LENGTH** Length 14" (36cm)
- LEATHER** Patent Leather, Full grain leather

Forward cut flap option available

RACE SADDLES

1kg RACE SADDLE



Forward cut flap option available

- CODE** SF1kg
- COLOURS** See colour chart for leather, stitching and piping options
- GIRTH STRAPS** Double or single girth straps available. They are attached via stainless steel buckle. Additional pairs available for purchase
- TREE LENGTH** Length 16" (41cm)
- LEATHER** Patent Leather, Full grain leather

1.5kg RACE SADDLE



Forward cut flap option available

- CODE** SF1.5kg
- COLOURS** See colour chart for leather, stitching and piping options
- GIRTH STRAPS** Double or single girth straps available. They are attached via stainless steel buckle. Additional pairs available for purchase
- TREE LENGTH** Length 17" (43cm)
- LEATHER** Patent Leather, Full grain leather

2kg RACE SADDLE



Forward cut flap option available

- CODE** SF2kg
- COLOURS** See colour chart for leather, stitching and piping options
- GIRTH STRAPS** Double or single girth straps available. They are attached via stainless steel buckle. Additional pairs available for purchase
- TREE LENGTH** Length 17" (43cm)
- LEATHER** Patent Leather, Full Grain Leather

3kg RACE SADDLE



Forward cut flap option available

- CODE** SF3kg
- COLOURS** See colour chart for leather, stitching and piping options
- GIRTH STRAPS** Double or single girth straps available. They are attached via stainless steel buckle. Additional pairs available for purchase
- TREE LENGTH** Length 18.5" (47cm)
- LEATHER** Patent Leather, Full Grain Leather

STRIDEFREE® SQUAD

Meet our **StrideFree®**Squad members who are much loved ambassadors of our brand.



Danny O'Brien Racing



Tom Sadler



Georgia King



Jack Dace

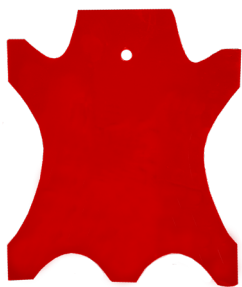


LEATHER OPTIONS

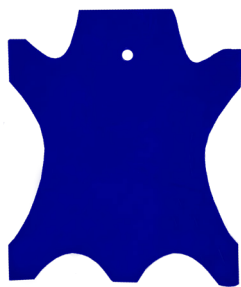
Patent Leather



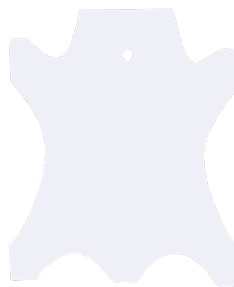
Black



Red

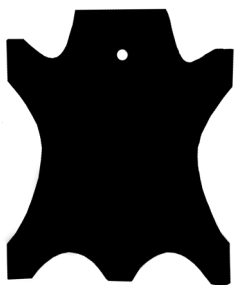


Blue



White

Goat Leather



Black



Brown



Chestnut



Burgandy

Croc Print



Black



Brown



Blue



Red



Orange

Ostrich Print



Black

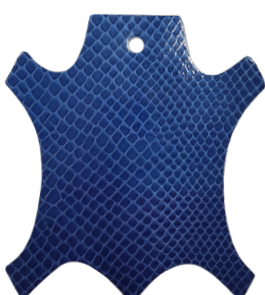


Brown



Chestnut

Snake Skin Print



Blue

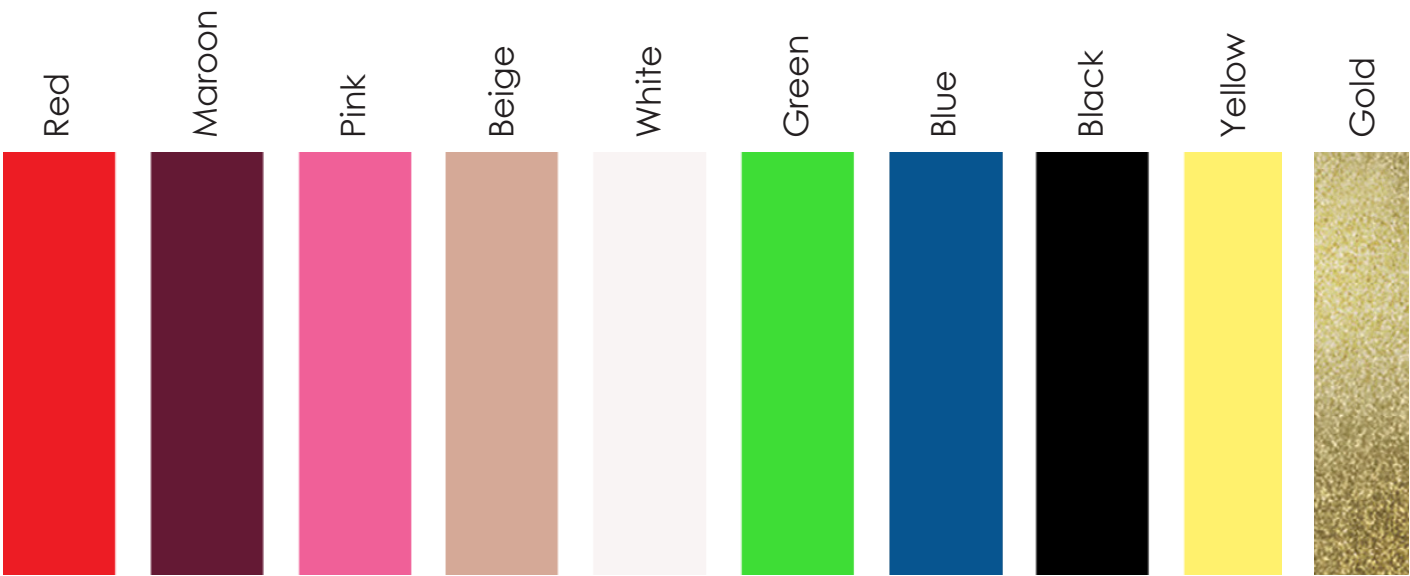


Red

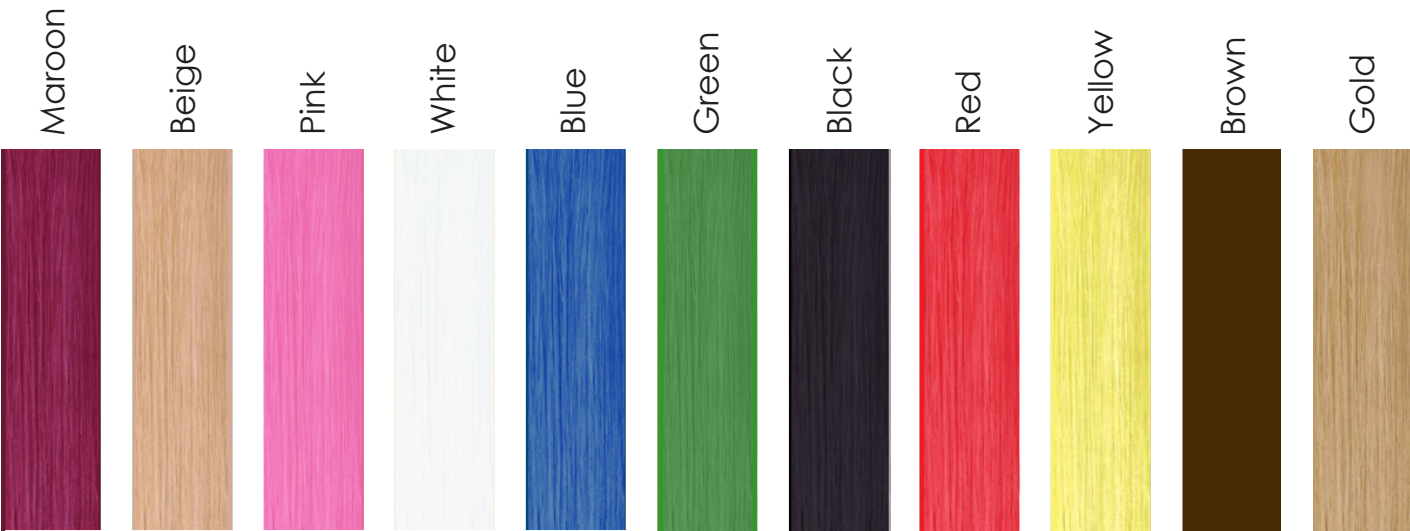
Colours subject to availability

COLOURS

PIPING COLOURS



STITCHING COLOURS



This is a representation of our piping and stitching colours, therefore colours of the real product may vary slightly.

Custom colours on exercise saddles are available however a minimum order quantity is required.

THE SCIENCE BEHIND STRIDEFREE®

When we discuss saddles of any type, there usually follows a conversation of the saddle tree. The StrideFree® tree, has been designed to allow complete freedom of the horses' shoulder movement. This will allow lengthened stride and can also give the horse a more comfortable and productive workout.

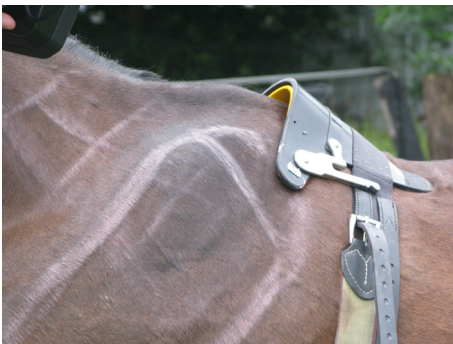
The horses' forelimbs are considered to be attached by a 'false joint'. Only soft tissue structures (muscles and fascia) hold the forelimbs to the trunk (horses lack of a collar bone), thus any restriction of those structures can impede full range of motion through extension and retraction of the limb. The top portion of the scapula is a cartilage cap, and the rest is bone. The thin trapezius muscle which has both a cervical and thoracic portion plays a role in forelimb attachment and movement, and also houses sensitive nerves, which when triggered can cause a hollowing of the back and raising of the head, as well as pain in the surrounding area and behavioural or training problems. Your common half trees and full trees, whether steel or wood, hang on to this area, directly affecting the spine and nerves causing pain and influencing performance.

This is why the StrideFree® philosophy has become one of the most important cogs in the wheel of training methods. Ultimately, when a StrideFree® tree is used every day in comparison to other trees, it can assist and improve on performance.

The tree has been tested for breakage under extremely strenuous conditions, which allows us to be confident in providing a 100% guarantee and lifetime warranty on the saddle tree.

The stirrup bars have two designs. One is Australian standard and the other a safety stirrup bar, meeting International standards. They have been tested for strength and safety.

Peter Horobin, who has been a saddler and saddle fitter for over 35 years, thought about the equine anatomy when developing the patent designed StrideFree® tree, and from his experience working with equine professionals across the world, he was able to develop a saddle that features cutting edge technology that also encompasses comfort for the rider.



A common half tree (the design when girthed up applies pressure on the spinal processes and restricts movement in the shoulders) This kind of pressure can cause tension and can restrict the horses movement when in motion.



A common steel half tree which applies pressure on the horses' spinal processes and when girthed up with a surcingles could cause pain and pressure on the horses back, wither area and shoulder area. This can result in irreversible damage.



The StrideFree® tree is shaped to allow complete shoulder freedom movement, clears the spinal processes, is flexible in the back to allow the back end of the horse to bring up it's hindquarters, which ultimately lengthens stride through range of motion.

SADDLE FEATURES



EXERCISE SADDLES



Available only in Australia

ORIGINAL

- CODE** SForiginal
- COLOURS** See colour chart for leather, stitching and piping options*
- GIRTH STRAPS** 7/8" Solid chrome tanned girth straps
- LEATHER** Full Grain Leather



DELUXE

- CODE** SFdeluxe
- COLOURS** See colour chart for leather, stitching and piping options*
- GIRTH STRAPS** 7/8" Solid chrome tanned girth straps
- LEATHER** Full Grain Leather
- EXTRA FEATURES** Extra soft padded seat, first grade leather



SUEDE

- CODE** SFsuede
- COLOURS** See colour chart for leather, stitching and piping options*
- GIRTH STRAPS** 7/8" Solid chrome tanned girth straps
- LEATHER** Full Grain Leather, suede seat
- EXTRA FEATURES** Suede seat



MONTE

- CODE** SFmonte
- COLOURS** See colour chart for leather, stitching and piping options*
- GIRTH STRAPS** 1" Solid chrome tanned girth straps
- LEATHER** Full Grain Leather.
- EXTRA FEATURES** Front and rear D-rings

EXERCISE SADDLES

USA STYLE

CODE SFamerica

COLOURS See colour chart for leather, stitching and piping options*

GIRTH STRAPS 1" Solid chrome tanned girth straps

LEATHER Full Grain Leather

EXTRA FEATURES Extra soft padded seat, first grade leather



JAPANESE STYLE

CODE SFjapan

COLOURS See colour chart for leather, stitching and piping options*

GIRTH STRAPS 7/8" Solid chrome tanned girth straps

LEATHER Full Grain Leather



All **Australian** training saddles have the compulsory **closed stainless steel safety bar**.



Any saddles purchased **Internationally** will feature the **safety stirrup bar**.

*Custom colours on exercise saddles are available however a minimum order quantity is required.

ACCESSORIES

STRIDEFREE® EXERCISE GIRTH



Made from anti-gall material. USA/Europe: 1" buckles. Aus/NZ/Japan: 7/8" buckles. Code: SFgirth

ELASTIC GIRTH & SURCINGLE SET



Durable elastic surcingle and girth.
Available only at RRP.
Code: Allelastic

ELASTIC BREAST PLATE - PVC STRAPPING



Elastic breastplate with PVC strapping.
Available only at RRP.
Code: Breastplate

STAINLESS STEEL SAFETY STIRRUPS



Stainless steel safety stirrups.
Available only at RRP.
Code: Safetystirrups

STRIDEFREE® EXERCISE STIRRUP LEATHERS



Durable, strong whilst soft and comfortable against your leg. The exercise training stirrup leathers are perfect for track in the morning. Tested for strength and maximum weight, these leathers won't crack under pressure. Code: SFleathers

ACCESSORIES

ANTI-REARING STRAP



English leather anti-rearing strap with brass buckles to match your headcollar on race day.
Code: PHrearing

(Bit seen in image is not included. Purchase separately)

RACE BRIDLE - BUCKLE THE OVER HEAD



The Peter Horobin English leather race bridle with the buckle overhead has been used on many winning horses in Australia and overseas. Adjustments on cheek pieces and throat lash, the race bridle is winner for race day.
Code: PHbridlebuckle

LEATHER RACE BRIDLE - SLIDING BROWBAND



Peter Horobin English leather race bridle with sliding browband features brass buckles and adjustable throat lash and cheek pieces.
Code: PHbridlebrow

LEATHER BIT LIFTER



The English leather bit lifter with attachment and brass buckles.
Code: PHbitlifter

STRIDEFREE® CROSSOVER NOSEBAND



English leather with stainless steel buckles, hand stitched and comfortable leather nosepiece.
Code: Crossover

STRIDEFREE® CROSSOVER NOSEBAND SHEEPSKIN



English leather with brass fittings and sheepskin for softness around the nose.
Code: Crossoversheep

ACCESSORIES

PLAIN LEATHER HEADCOLLAR



Plain English leather headcollar with stitching and brass buckles. Available in black or brown.

Sizes: Pony, Cob, Full and WB.
Code: PlainHC

BRASS NAMEPLATE



Brass nameplate to fit your headcollar. We can organise the engraving or send to you with no engraving. Each plate comes with screws. Purchase our plain leather headcollar, and we'll organise the engraving and have our PHS saddler put the nameplate on for you.
Code: PaddedHC

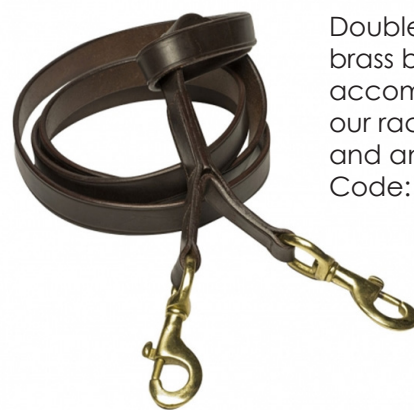
WINX

SINGLE CLIP LEAD WITH LOOP



Single clip lead with loop. Made in English leather with brass buckles.
Code: PHsingle

LEATHER DOUBLE CLIP LEAD



Double clip lead with brass buckles. Perfect accompaniment with our race day bridle and anti-rearing strap.
Code: PHdouble

STALLION CHAIN & LEATHER LEAD



Stallion chain and leather lead is very popular for adding extra glamour to your stallion. Made in English leather. Durable and strong lead.
Code: LeadS



CONNECT WITH US

Peter Horobin Saddlery
18 Milgate Drive, Mornington, Victoria 3931
Australia

Tel: 61 3 5975 1055
Email: stridefree@horobin.com.au
Web: www.horobin.com.au



Visit our website to find your nearest StrideFree® Racing stockist


Peter Horobin Saddlery®
Est. 1985


STRIDE
FREE®
RACING

